

Sixth Form 2022-23

Admission Checklist - AS Level(Yr12)



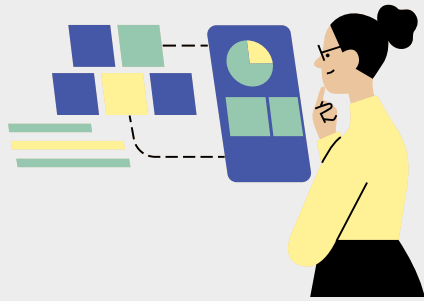
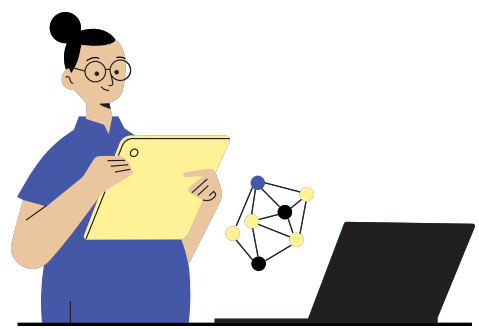
Sept - June 2022

- Focus and work hard to secure A*/ A / B
- Maintain Very Good Attendance
- Take CAT4 Assessment
- No behavior issues at all times
- Individual Teacher evaluation of attitude and behavior will be considered for sixth form admission



Sept - June 2022

- Good Uniform record and Good Punctuality record is mandatory
- Create an E portfolio - mention about your achievements / leadership roles / passion / family / careers / personal skills / strengths / areas of development.



Jan - Feb 2022

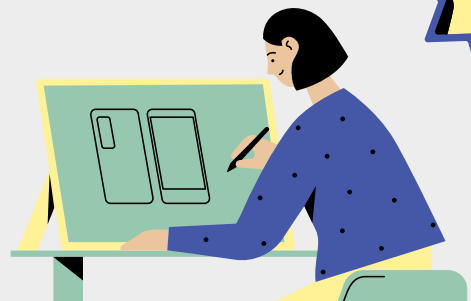
AS level orientation for Parents on the entry requirement will be held in January 2022

Fill in the application form and submit by 10th February 2022, you can access the form on parent portal from 25th January 2022.

Jan - April 2022

Students who have not met the minimum requirement of A* - B will receive three reminders to improve their performance so that they qualify for AS level admission.

Incase they do not show progress, they will not be able to join Year 12 (AS level).



August 2022

- In August once results are declared, students who have scored A* - B will receive express entry mail with an online fee payment link within 4 working days from the day of the result after verifying each ones behaviour record.
- Once your admission is confirmed by the Admission team, visit the registrar and fee counter to complete the procedure.
- Other students can visit the school to book an appointment with the Head of Key Stage 5 Leader.
- Students with C grades and below are not eligible for admission.



Welcome to Sixth form 2022-2023 upon meeting all the criteria set above.

How to register to AS level (Year 12)

starting 25th January 2022

for

Academic Year 2022-2023



GEMS Parent Portal

GEMS Education / GEMS Connect / GEMS Parent Portal / Find a GEMS School / PHOENIX Classroom (Web) / PHOENIX Classroom Mobile App

- GEMS Education**
For anyone to find out more about GEMS Education around the world, plus search for GEMS Schools and Careers
- GEMS Connect**
Welcome to GEMS Connect, your one stop shop for range of services related to your child's education!
Use your parent portal credentials to login into GEMS Connect
- GEMS Parent Portal**
To update their contacts, access reports, make payment and more
- Find a GEMS school**
For Parents looking to enrol at a GEMS school
- Classroom**
Classroom Phoenix Web is an end-to-end Learning Management System (LMS) connecting students, teachers and parents.
- Classroom**
Classroom Phoenix App is an end-to-end Learning Management System (LMS) connecting students, teachers and parents.



Navigation: Home, Student Profile, Curriculum, Fees, Requests, Update Information

Student Information

Student Id		Academic Reports
Joining Date	1/10/2012 12:00:00 AM	Option Selection
Grade & Section		Primary Contact Name
Teacher Incharge		Primary Contact Email
		Primary Contact Phone

Buttons: Information, Activities, Re-enrollment

AS and A level Registration on parent portal

Navigation: Home, Student Profile, Curriculum, Fees, Requests, Update Information

Provisional Student Option Selection

Academic Year: 2021-2022 | Grade: 12

- Submission of online registration form by 10th February 2021.
- Submission of registration form is not a guarantee for admission. However forms not submitted on time will mean you are automatically excluded from admission.
- Please ensure that you have read the eligibility criteria, the Post 16 booklet and the Ministry of Education equivalency on the school's website as part of your application process.
(Link: <https://www.gemsws-ghusais.com/admissions/admissions-process/>)
- A minimum of 2 subjects and a maximum of 4 subjects may be taken at AS level (Year 12)
- Change to commerce stream: Please note that entrance exam for AQA Business / Accounting / Economics will be held on 25th August 2021 at 9 a.m. (IGCSE syllabus will be tested).
- Maximum of 3 A level subjects will be taught in Year 13 (2022-2023)

For further details on course content

- CAIE : <https://www.cambridgeinternational.org/>
- Pearson Edexcel : <https://qualifications.pearson.com/en/home.html>
- Oxford International AQA : <https://oxfordaqaexams.org.uk/>

Groups: Group 1, Group 2, Group 3, Group 4, Group 5

Group 1	Psychology	(Oxford AQA)	Information Technology
Group 2			English
Group 3			Geography(Oxford AQA)
Group 4			
Group 5			

**Note: Please select a minimum of 2 options.

GROUP1 GROUP2 GROUP3 GROUP4 GROUP5

Your provisional option selections have been successfully saved. These choices are subject to official confirmation

Option	Subject
Option 1	--
Option 2	--
Option 3	--
Option 4	--

